

# **Boat Briefing**

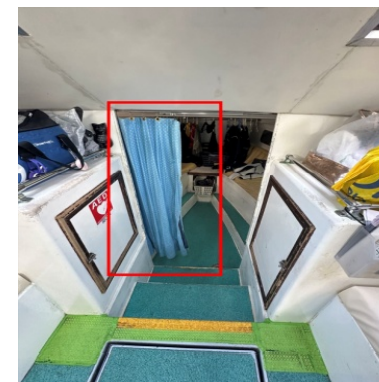


The boat's name is "Flap".  
If you had trouble and were rescued by another boat, I was a passenger of "flaps". Explain that

The room at the far end is used only for changing.  
Please close the curtains when you use the room and leave it open when you are done.



Please leave your bags on the shelves.  
The middle room is not a dry room and you may enter it after your dive.



Use the washed cup to drink tea or other beverages. When you are finished drinking, put the cup in the sink.  
Leave your underwater camera here or manage it yourself.





**After using the toilet, press the button for about 10 seconds to flush.**

**When you use the paper, throw it away in the yellow box. Do not flush it down the toilet.**

**If you feel seasick or need to vomit, do not use the toilet, but vomit into the sea from the rear of the boat.**

**When using the shower, be careful of the direction of the water. Do not let others see you.**

**The fresh water tank is limited on the boat. Please save water.**



**You can move forward from the left and right aisles. You can then go upstairs. Please note that the boat is rocking when it is running.**

**Diving equipment should be laid down after assembly is complete.  
Place the fins and mask on the left and right bars.**



**If you are not wearing a wetsuit while on board, you must wear a “RED life belt”. This is Japanese law.  
If you go into the ocean or take a shower while wearing this belt, it will automatically inflate.  
If it does not inflate automatically, pull the yellow pin.**

**Lunch boxes are available on the boat. Please hand the lid of the lunch box and the chopstick bag to the staff. They may fly away in the wind.  
And hot soup will also be provided.  
If you cannot finish it, please hand it to the staff.**



**If you have any other questions, please ask our staff.  
If you feel not good or have any changes in your health, please let our staff know immediately.**

**Have a fun day and dive.**